

RAC Foundation

Local Authority Parking Finances in England 2013/14

By David Leibling – December 2014

1. Introduction

Local authorities are required to submit details of their finances to the Department of Communities and Local Government, following a detailed set of rules prepared by the Department each year. They are normally published in November after the financial year end.¹ This report looks at the tables on parking income and expenditure for the period from 2009/10 to 2013/14 as changes in local government organisation in April 2009 prevent comparison for certain parts of the country before that. Councils are also required to submit their budgets for the current financial year but on a less detailed basis. These figures are included where appropriate.

There are 353 local authorities in England. It should be noted that in some areas (e.g., with two-tier local authorities) council parking will involve more than one local authority.

The income and cost headings used in this analysis are:

1. On-street income, expenditure and capital charges and income from penalty charges
2. Off-street income, expenditure and capital charges
3. Total transport income, expenditure and capital charges

(Capital charges relates to interest and depreciation.)

These headings do not always agree with accounts published by local authorities directly because of their different treatment of overheads and allocation of surpluses to other transport projects.

Furthermore seven local authorities include parking in their internal trading accounts which leads to further inconsistencies. These trading figures have been added to the revenue accounts.

2. Summary

Figure 1 and Table 1 below show the summary accounts for local authorities in England and the trend over time.

At the end of this report there are parking outturn figures for all the local authorities ordered alphabetically and by level of surplus.

Overall in 2013/14 they collected just over £1.43 billion from parking tickets, permits and penalties, spent just under £0.76 billion and made a surplus of nearly £0.67 billion. After capital charges (interest and depreciation) of around £0.12 billion, the net surplus was £0.55 billion. By law any

¹ <https://www.gov.uk/government/collections/local-authority-revenue-expenditure-and-financing>

surplus must be used for transport projects. The surplus after capital charges are taken into account amounted to 7% of all local authority transport expenditure.

On-street income rose by only 1% over the 2012/13 figure. On-street penalty income fell by 3%. The number of penalty charge notices issued in London in 2013/14 was 4.08 million, marginally higher than in 2012/13; figures for the rest of England are not yet available but based on this figure it would appear that the level of penalties has levelled off. Off-street income rose by 3% in the past year.

However, local authorities have reduced their running costs – by 10% for on-street and 2% for off-street parking.

As a result the surplus from on-street parking rose by 16% and by 8% from off-street, leading to an overall increase of 12% to £667 million (up from £594 million in 2012/13). Local authorities in England are budgeting for a surplus in the current year of £648 million.

Capital charges for on-street parking, although small, fell sharply, while those for off-street have risen marginally. Overall the surplus after capital charges was £549 million, a 19% increase compared with £460 million the previous year.

This surplus must, by law, be used for transport projects. The surplus before capital charges contributed 14% of all local transport expenditure and 7% after capital charges are taken into account.

Figure 1 Parking Revenues – trend over time

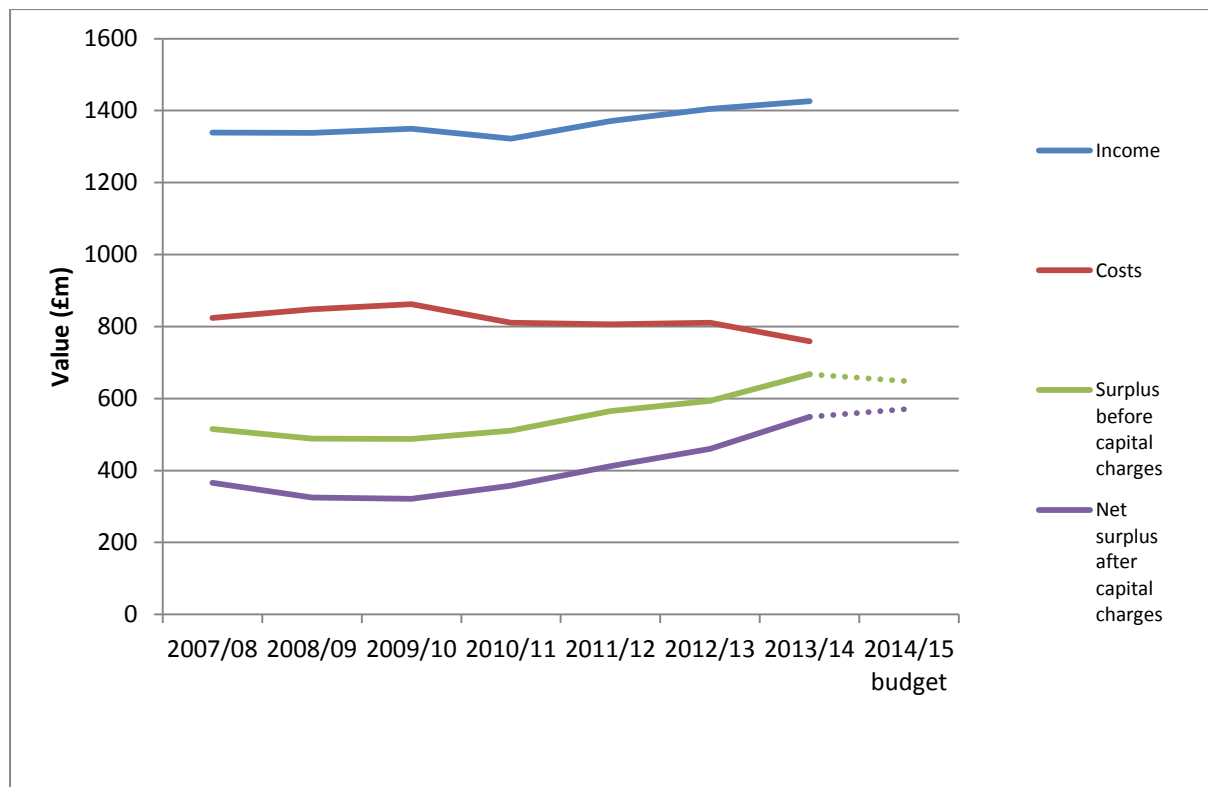


Table 1 Summary of parking accounts for England

	£million	2009/10	2010/11	2011/12	2012/13	2013/14	2014/15 budget	Change 2013/14 on 2012/13
On street	Income	708	696	753	770	775		1%
	Costs	506	457	457	454	408		-10%
	Surplus	202	239	296	316	367		16%
Off street	Income	642	626	618	635	651		3%
	Costs	356	354	349	357	351		-2%
	Surplus	286	272	269	278	300		8%
On street	PCN income (included in above)	339	316	340	353	343		-3%
On street	Capital charges	11	20	17	27	9		-67%
	Net surplus	191	219	279	289	358		24%
Off street	Capital charges	156	133	136	107	109		2%
	Net surplus	130	139	133	171	191		12%
All parking	Income	1350	1322	1371	1405	1426		1%
	Costs	862	811	806	811	759		-6%
	Surplus before capital charges	488	511	565	594	667	648	12%
	Net surplus after capital charges	321	358	412	460	549	571	19%
All transport	Income	2994	2845	2738	2735	2780		
	Costs	9525	8514	8118	7571	7576		
	Deficit	-6531	-5669	-5380	-4835	-4796	-4813	
	Capital charges	1126	2974	2731	2716	2778	2457	
	Net deficit	-7657	-8643	-8111	-7551	-7574	7270	
	Parking income as % of all transport income	45%	46%	50%	51%	51%		
	Parking surplus as % of net transport expenditure							
	before capital charges	7%	9%	11%	12%	14%	13%	
	after capital charges	4%	4%	5%	6%	7%	8%	
	Parking capital charges as % of all capital charges	15%	5%	6%	5%	4%	3%	

3. Income

Total income in 2013/14 was just over £1.4 billion (1% higher than in 2012/13). Income from on-street tickets and permits was £0.4 billion (up 4%), a further £0.3 billion comes from on-street penalty charges (down 3%) and £0.65 billion (up 3%) from off-street charges and penalties. Note that this does not include off-street income received by commercial off-street parking facilities. The total income is equivalent to about £50 per year per motorist – a similar figure to that derived from the annual ONS Living Costs and Food survey and much lower than the £1,600² that the average motorist spends a year on fuel, yet parking charges are a very emotive topic amongst motorists.

40% of total parking income comes from London, although Londoners own only 10% of the cars in the UK but, of course, incoming commuters will also contribute to parking income and penalties. London boroughs make relatively little from off-street parking (about 10% of total income compared with 69% for English councils outside London) as most of London's off street car parks are commercially run.

² Figure derived by the author from average mileage and average fuel consumption data.

Table 2a Parking income (on- and off-street) – Councils in London

£ million	2009/10	2010/11	2011/12	2012/13	2013/14	Change 2013/14 on 2012/13
Westminster	83.4	84.3	80	77.9	80.6	3%
Kensington & Chelsea	37.6	36.5	42.8	44.5	47.1	6%
Camden	41	39.2	39.3	37.1	38.8	5%
Hammersmith & Fulham	24.9	28.3	31.1	31.7	34.7	10%
Wandsworth	24.2	25.2	27	28.2	29.6	5%
Islington	29	24.2	26.1	25.5	25.7	1%
Lambeth*	18.0*	24.3	25.1	24.8	24.7	-1%
Ealing	14	14.5	20	19.4	18.9	-2%
Hackney	13.2	16.5	15.3	18.3	18.6	1%
Haringey	12	13	14.8	15.2	16.3	7%
Tower Hamlets	16.5	16.8	17.5	18.2	16.1	-12%
Newham	12.1	13.1	17.2	16.4	16	-3%
Brent	14.8	13.7	16.9	15.9	13.7	-14%
Barnet	10.3	9.2	14	14.3	12.6	-12%
Hounslow	10.6	11.2	12.2	11.7	12.4	6%
Richmond upon Thames	12.1	11.4	9.8	11.4	12	5%
Croydon	16	14.6	11.9	12.1	11.8	-2%
City of London	9.3	10	11.1	11.3	11.5	2%
Merton	8.1	8.2	9.5	11.2	11.4	2%
Waltham Forest	9.9	9.3	10.4	9.8	10.6	8%
Kingston upon Thames	8.8	8.5	9.3	9.6	10.4	9%
Bromley	9.5	10	10.3	10.6	10.3	-2%
Southwark	11.2	11.9	10.9	9.6	10.3	8%
Harrow	8.2	8.5	8.6	10.2	10	-1%
Enfield	13	10.9	10.8	10.4	9.6	-8%
Hillingdon	9.3	9.4	9.7	9.7	9.4	-4%
Greenwich	7.8	6.1	8.5	9.5	9	-6%
Redbridge	6.5	7.5	7.9	8.1	8.3	2%
Lewisham	8.4	7.9	7.7	7.9	7.5	-4%
Barking & Dagenham	5.5	5	5.2	5.8	6	4%
Bexley	4.6	4.4	4.6	4.6	4.6	2%
Havering	3.1	3	3.6	3.6	3.6	1%
Sutton	2.8	2.7	2.9	2.8	2.8	-2%
Total London	541.8	519.3	552.2	557.4	565.1	1%
*Lambeth figure adjusted from Annual Report						

Overall on- and off-street parking income in London in 2013/14 is only 1% higher than in 2012/13 but this ranges from an increase of 10% in Hammersmith and Fulham to declines of over 10% in Tower Hamlets, Brent and Barnet.

Table 2b Parking income (on and off street) – Top 30 English Councils outside London

£ million	2009/10	2010/11	2011/12	2012/13	2013/14	Change 2013/14 on 2012/13
Brighton & Hove UA	21.6	23.1	23.6	24.2	25.8	7%
City of Nottingham UA	9.3	8.8	9.3	17.4	18.9	9%
Birmingham	19.2	17.7	18.7	19.6	18.3	-6%
Manchester	11.1	12.5	13.7	15	14.8	-2%
Cornwall UA	13.9	13.9	14	14.2	14.3	0%
Newcastle upon Tyne	13.5	12.5	13.9	13.9	14.3	3%
Bristol UA	9.7	9.9	10.8	11.8	13.3	13%
Leeds	12	11.7	13	12.6	12.6	0%
Milton Keynes UA	8.7	9	10.1	10.2	11.4	11%
Guildford	9.4	10.1	10.7	10.9	11.1	2%
Bath & North East Somerset UA	11.4	12.3	10.7	10	10.4	4%
Colchester	7.2	6.5	8.4	9.9	10.2	3%
Cambridge	10.7	9.8	8.7	8.7	8.9	2%
Bournemouth UA	8.7	8	8.2	8.2	8.5	3%
Norwich	3.2	3.3	3.5	7.9	8.4	7%
Oxford	7.1	6.7	7.2	7.7	8.4	9%
Sheffield	6.8	6.5	6.9	7	8.1	15%
Liverpool	8.4	7.9	8	8.3	7.9	-5%
Wiltshire UA	8	7.7	7.6	7.6	7.4	-2%
Canterbury	6.3	6.6	6.8	6.9	7.4	8%
Woking	6.5	6.5	6.8	6.5	7.2	10%
York UA	7.8	7.7	7.7	8	7.2	-11%
Southampton UA	6.4	5.7	6.5	6.3	7	12%
Exeter	6.2	5.8	6	6.2	7	12%
Southend-on-Sea UA	6	5.5	6.7	6.4	7	8%
Portsmouth UA	3.7	6.2	6.1	6.1	6.7	9%
Windsor & Maidenhead UA	6.5	6.4	6.5	6.5	6.6	3%
Scarborough	6.5	6.3	6.2	5.5	6.4	16%
Surrey	1.7	2	4.6	8.4	6.3	-25%
Reading UA	5	5.5	5.7	6.1	6.3	3%
Total excluding London	809.5	803.8	820	847.9	860.4	1%

The highest income outside London was in Brighton and Hove which ranks 6th nationally after the top five London boroughs. Nottingham ranks 2nd outside London because it collects around £10 million per year from the Workplace Parking Levy. The levy is now in its second year and is expected to raise £14 million when fully operational.

Table 3 Parking income off -street – Top 20 English Councils Outside London

£ million	2009/10	2010/11	2011/12	2012/13	2013/14	Change 2013/14 on 2012/13
City of Nottingham UA	5.6	5.2	5.2	13.3	14.8	11%
Cornwall UA	13.2	13.3	13.2	13.3	13.4	1%
Newcastle upon Tyne	9	8.5	9.5	9.3	9.4	1%
Guildford	8.1	8.8	9.2	9.3	9.3	0%
Birmingham	10.1	9.1	9.5	10.2	9.2	-9%
Cambridge	7.7	8.5	8.7	8.7	8.9	2%
Oxford	7.1	6.7	7.2	7.7	8.4	9%
Bath & North East Somerset UA	8.8	8.6	8	7.4	7.4	1%
Southampton UA	6.4	5.7	6.5	6.3	7	12%
Bournemouth UA	7.5	6.6	6.8	6.7	7	4%
Norwich	1.3	1.3	1.6	6.2	6.5	6%
Canterbury	5.5	5.7	5.9	6.1	6.5	8%
Woking	5.8	5.8	5.9	5.7	6.4	12%
Exeter	5.5	5.2	5.4	5.7	6.2	9%
Coventry	5.9	5.2	4.7	3.9	6	53%
Wiltshire UA	6.5	6.5	6.4	6.1	6	-2%
Chelmsford	5.8	5.7	5	5.5	6	8%
Winchester	5.2	5.2	5.2	5.7	5.9	2%
York UA	6.1	6	6.1	6.4	5.7	-11%
Windsor & Maidenhead UA	5.2	5.3	5.4	5.3	5.6	5%
Total excluding London	565.5	558.7	561.6	634.9	594.7	-6%

In contrast to on-street parking, which is dominated by the London boroughs, off-street parking is much more important in large towns. Overall income fell by 6%. Excluding Nottingham with its Workplace Parking Levy, Cornwall tops the list as a unitary authority managing parking for the whole of the county. Coventry showed a large increase in off-street income in 2013/14 - back to the level of 2009/10 after several years of decline. Six London boroughs do not have any council off-street parking as it is now all commercially operated (Hackney, Hammersmith and Fulham, Islington, Lambeth, Wandsworth, Westminster).

Tables 4a and 4b below show penalty income for on-street parking and show the proportion of total on-street income that it represents.

Overall penalty income in 2013/14 was £343 million compared with £353 million in 2012/13, a fall of 3%. Penalty charge notices issued in London in 2013/14 were 4.08 million, marginally higher than in 2012/13. Figures for the rest of England are not yet available but it would appear that the level of penalties has levelled off.

Total penalty income in London in 2013/14 was £242m – 71% of the national total of £343m. The non-London amount remained unchanged at £101 million. The non-London council with the highest penalty income was Manchester, ranked 19th nationally.

London councils saw penalty income decrease by 4% in 2013/14. There was considerable variation in declared penalty income with some large increases (Southwark 63%, Barnet 44%, Newham 40% and equally large falls (Greenwich 83%, Hackney 67%, Croydon 43%, Brent 30%). Sutton did not record any at all. While some of the change may reflect changes in enforcement as reflected in the number of PCNs issued, the magnitude suggests that there might be some inconsistencies in reporting.

Outside London, the picture is more varied and also reflects two tier management of parking, where in some cases, e.g. in Essex, the county collects the penalty income while the districts collect the meter income. Of the large cities and towns, Leicester has increased its penalty income over the past year from £1.0 million to £3.2 million, Milton Keynes from £0.1 million to £2.1 million and Bristol from £2.9 million to £5.0 million. Dacorum (Hertfordshire) started a penalty scheme in the 2013/14 year, collecting £2.1 million.

These changes reflect both enforcement policy (e.g. number of enforcement officers on the streets, leniency towards minor infringements) and driver behaviour (e.g. better conformance).

On-street penalties represent between 25% and 90% of total on-street income, with non-London councils towards the lower end. At the lower end in London were Wandsworth, Kensington and Chelsea and Westminster. In the last two cases, the high proportion of non-permit income reflects the high hourly parking charges and the high cost of the large number of resident permits. Barking & Dagenham, Harrow, Lewisham and Newham show penalty income near, or at, 100% of on-street income.

Table 4a On-street penalty income – Councils in London

£ million	On-street penalty income					On-street penalties as % of on-street income			
	2010/11	2011/12	2012/13	2013/14	Change 2013/14 on 2012/13	2010/11	2011/12	2012/13	2013/14
Westminster	22.1	25.3	24.5	25.1	2%	31%	32%	31%	31%
Hammersmith & Fulham	11	18.2	17.9	19	6%	39%	59%	56%	55%
Camden	18.7	18.5	15.9	18.9	19%	51%	50%	44%	50%
Lambeth	16.8	16.7	17.2	17.8	3%	69%	67%	69%	72%
Newham	7.7	10.8	9.9	13.9	40%	70%	73%	69%	97%
Kensington & Chelsea	10.2	9.4	9.8	10.6	8%	29%	23%	23%	23%
Islington	9.5	11.2	10.1	10.1	0%	39%	43%	39%	39%
Harrow	5.6	5.6	6.9	8.4	21%	80%	79%	81%	99%
Ealing	10.1	10	9	8.3	-8%	77%	55%	51%	49%
Haringey	7.2	8	7.8	7.8	0%	58%	55%	53%	50%
Wandsworth	6	7.1	7	7.4	6%	24%	26%	25%	25%
Brent	7.2	9.6	11.7	7.1	-40%	56%	60%	76%	53%
Waltham Forest	6.1	7.7	7.1	7.1	0%	70%	79%	76%	70%
Barnet	5.1	7.2	4.9	7	44%	60%	55%	36%	59%
Tower Hamlets	5.2	5.4	6.5	6.5	-1%	31%	31%	36%	40%
Croydon	6	6.4	10.5	6	-43%	63%	63%	100%	58%
Hackney	9.3	5.5	17.3	5.7	-67%	57%	36%	96%	31%
Lewisham	5.1	5	5.5	5.5	2%	100%	100%	100%	100%
Redbridge	4.8	5	5.3	5.4	2%	73%	73%	74%	74%
Hounslow	4.9	5.7	5.4	5.3	-3%	53%	57%	56%	51%
Southwark	4.6	5.5	3.1	5.1	63%	53%	93%	72%	95%
Merton	2.7	3.4	4.8	4.9	2%	40%	44%	51%	51%
Barking & Dagenham	4.3	3.7	4.6	4.9	6%	93%	93%	89%	100%
Bromley	4	3.6	3.6	4.4	23%	62%	58%	56%	65%
Enfield	4.7	4.9	4.4	3.8	-13%	63%	62%	57%	54%
City of London	3.3	4.5	4.2	3.3	-23%	46%	52%	48%	39%
Kingston upon Thames	2.5	2.6	2.8	2.9	3%	70%	47%	50%	47%
Richmond upon Thames	2.9	1.5	2.8	2.8	0%	37%	24%	35%	34%
Hillingdon	2.9	1.5	3.8	2.7	-29%	42%	21%	54%	40%
Bexley	2.4	1.7	2.3	2.1	-8%	68%	70%	94%	85%
Havering	1.6	2.1	2	1.9	-6%	82%	80%	81%	76%
Greenwich	1.5	1.4	3.4	0.6	-83%	37%	28%	60%	17%
Sutton	0.9	0	0	0					
Total London	215.9	234.8	252	242.2	-4%	48%	50%	48%	48%

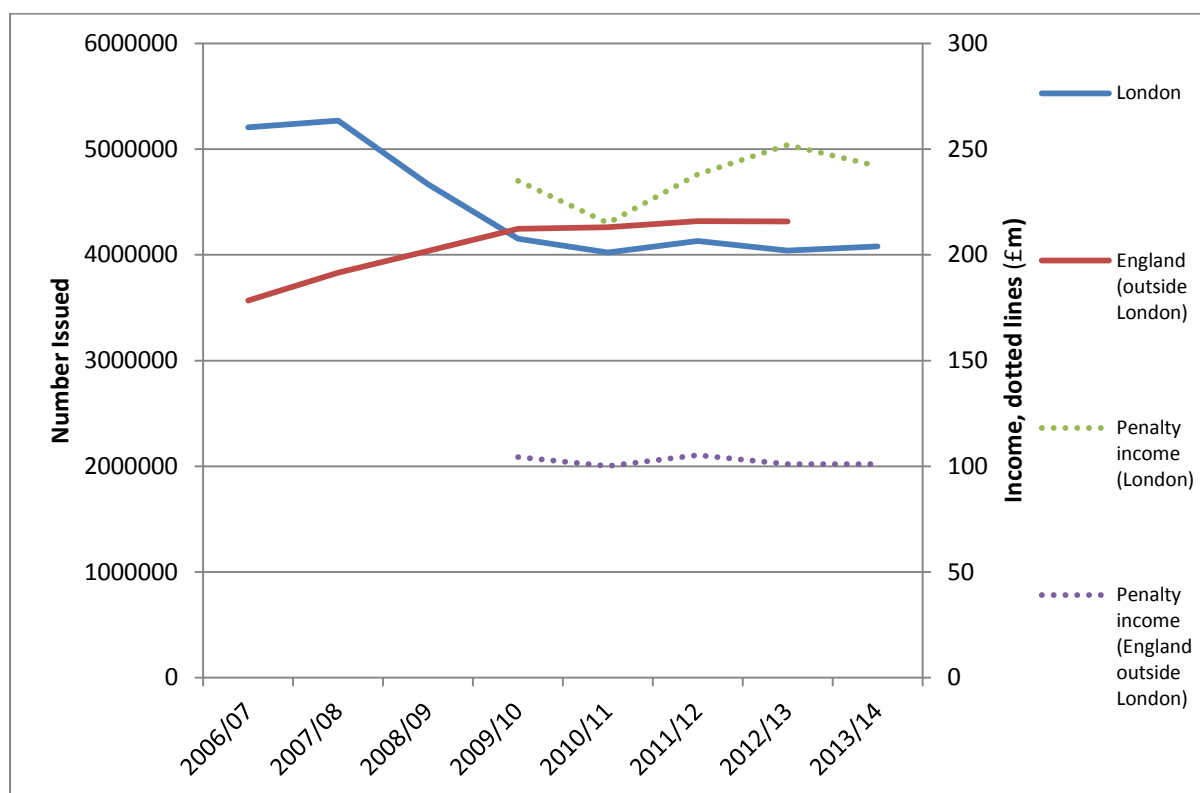
Table 4b On-street penalty income – Top 20 English Councils Outside London

£ million	On-street penalty income					On-street penalties as % of on-street income			
	2010/11	2011/12	2012/13	2013/14	Change 2013/14 on 2012/13	2010/11	2011/12	2012/13	2013/14
Manchester	3.6	5.6	5.8	5.4	-8%	47%	53%	49%	47%
Brighton & Hove UA	5.2	5	5	5.1	2%	28%	28%	26%	25%
Bristol UA	2.1	3.1	2.9	5	70%	39%	46%	43%	56%
Essex	0	4.4	4.5	4.5	0%	-	100%	100%	100%
Leicester City UA	1.6	1.3	1	3.2	209%	42%	39%	35%	96%
Leeds	3	3.9	3.7	3.2	-16%	47%	51%	50%	41%
Bradford	2.3	2.2	2.1	2.6	25%	87%	87%	79%	80%
Newcastle upon Tyne	0.5	0.7	2	2.3	14%	13%	16%	43%	47%
Milton Keynes UA	0.7	0.7	0.1	2.1	4069%	8%	7%	1%	19%
Dacorum	0.2	0.4	0	2.1		56%	100%	0%	100%
The Medway Towns UA	1.1	1	1.4	2	47%	59%	55%	62%	100%
Oxfordshire	1.8	2.1	2.3	2	-14%	46%	47%	47%	42%
Liverpool	5.4	2.2	2.5	1.8	-29%	100%	42%	42%	35%
Sheffield	0.3	0.3	1.7	1.8	5%	10%	9%	31%	28%
North Yorkshire	0	0	1.5	1.7	12%		0%	100%	100%
Colchester	0.6	1.2	1.3	1.7	28%	72%	74%	27%	32%
Lancashire	1.7	0	1.6	1.6	2%	84%	-	67%	77%
City of Nottingham UA	2.1	2.4	2.1	1.5	-29%	58%	58%	50%	35%
Reading UA	1.5	1.3	1.4	1.4	1%	83%	68%	68%	64%
Portsmouth UA	1.2	1	1	1.3	39%	35%	29%	27%	31%
Total excluding London	100	105	101	101	0%				

Penalty income can also be compared with the number of PCNs issued. The comparison is not exact as penalty income is only recorded for on-street offences (which are the majority of offences), while the number of PCNs is for all offences.

The average income per PCN in London has risen from £65 in 2012/13 to £67 in 2013/14. Outside London the average is much lower – a fairly constant £24 per PCN. Councils outside London are trying to have penalty levels raised as they are sometimes less than the cost of a day's parking.

Figure 2 Income and PCNs issued



Source: DCLG, London Councils, PATROL

4. Costs

Tables 5a and 5b below show expenditure on parking both on- and off-street. They do not include capital charges.

Costs have fallen in both London and the rest of England. In London, total costs fell from £303 million in 2012/13 to £269 million in 2013/14, a drop of 11%. This may largely be as a result of efficiency improvements. Outside London costs fell from £508 million to £489 million, with any reduction due to efficiency offset by councils extending their parking controls.

It also shows the proportion of income taken up by costs. Councils vary considerably in how much of their parking income is absorbed by costs which may be partly to do with accounting treatment, for example the way overheads are allocated. Costs also vary between years – Westminster has reduced its costs by 23% over the past year so that they are now the equivalent of just over a third of the income. Brent and Barnet reduced their costs by around 60% although both were very high in 2011/12 and 2013/14. Lambeth and Kingston have increased their costs by 36% and 20% respectively but had low costs in 2012/13.

In 21 out of the 33 London boroughs, penalty income more than covers the total costs of parking operations (running costs and enforcement costs); for the four boroughs where costs were not covered by penalty income anomalous figures for penalty income were presented, so calculations may be incorrect.

Table 5a Total expenditure (excluding capital charges) for London Councils

£ million	Total expenditure					Expenditure as % of income			
	2010/ 11	2011/ 12	2012/ 13	2013/ 14	Change 2013/14 on 2012/13	2010/11	2011/12	2012/13	2013/14
Westminster	46.1	38.4	38.2	29.6	-23%	55%	48%	49%	37%
Lambeth	17.3	19.3	12.8	17.5	36%	71%	77%	52%	71%
Islington	18.6	15.2	17.3	15.3	-11%	77%	58%	68%	60%
Ealing	10.5	15.5	15.2	14.2	-7%	72%	78%	78%	75%
Camden	18.1	14.3	13.6	13.9	3%	46%	36%	37%	36%
Kensington & Chelsea	15.4	14.7	14.1	13.6	-4%	42%	34%	32%	29%
Hammersmith & Fulham	11.6	11.6	12.3	11.8	-4%	41%	37%	39%	34%
Haringey	9.7	9.5	10	10.6	6%	75%	64%	66%	65%
Hackney	11.8	9.4	10.6	10.4	-2%	72%	62%	58%	56%
Wandsworth	10.7	10.9	12.4	9.9	-20%	43%	40%	44%	33%
Newham	9.3	9.9	8.3	8.8	7%	71%	57%	50%	55%
Croydon	10.1	9.8	9.5	8.7	-8%	69%	82%	79%	74%
Hillingdon	7.9	8.3	8.4	8.2	-3%	85%	85%	86%	87%
Tower Hamlets	10.9	11.7	11.2	7.8	-31%	65%	67%	61%	48%
Waltham Forest	7.2	7.2	7.7	7.4	-3%	78%	70%	78%	70%
Greenwich	4.6	6.5	7.3	7	-4%	76%	76%	77%	78%
Enfield	8.3	7.7	7.2	6.9	-5%	76%	71%	70%	72%
Southwark	9.3	8	7.9	6.4	-20%	78%	74%	83%	62%
City of London	6.8	6.8	7.5	5.9	-21%	68%	61%	66%	51%
Brent	9.8	14.2	13.2	5.4	-59%	71%	84%	83%	40%
Richmond upon Thames	6.3	5.6	5.3	4.9	-7%	55%	58%	46%	41%
Bromley	5.6	5.6	4.9	4.8	-3%	56%	54%	46%	46%
Barnet	7.9	14.2	13.5	4.7	-65%	86%	101%	94%	37%
Kingston upon Thames	5.8	4.6	3.9	4.7	20%	67%	50%	41%	45%
Hounslow	5.3	4.9	5.3	4.6	-13%	47%	40%	45%	37%
Redbridge	4	4	4.1	4.5	10%	53%	50%	50%	54%
Merton	3.8	3.8	4.3	4.4	1%	46%	40%	39%	38%
Barking & Dagenham	3.6	3.5	3.5	3.9	11%	73%	68%	61%	65%
Harrow	3.8	4	3.7	3.6	-3%	45%	47%	36%	36%
Havering	2.8	2.9	2.9	3.2	10%	95%	81%	81%	88%
Bexley	3.2	3	2.8	3	8%	72%	65%	61%	64%
Lewisham	4.9	3.1	3	2.3	-24%	62%	40%	38%	30%
Sutton	1.1	1.3	1.1	0.9	-19%	40%	44%	40%	33%
Total London	312	309.5	302.9	268.7	-11%	55%	56%	55%	52%

Table 5b Total expenditure (excluding capital charges) for top 20 English Counties outside London

£ million	Total expenditure					Expenditure as % of income			
	2010/11	2011/12	2012/13	2013/14	Change 2013/14 on 2012/13	2010/11	2011/12	2012/13	2013/14
Birmingham	12.6	13.2	12.7	10.5	-17%	71%	71%	65%	58%
Colchester	4.4	6.7	8.2	9	10%	68%	79%	83%	88%
Newcastle upon Tyne	7.9	7.2	7.6	8	5%	63%	52%	55%	56%
Brighton & Hove UA	10.4	9.2	7.9	7.7	-3%	45%	39%	33%	30%
City of Nottingham UA	5.2	6.1	5.6	6.8	23%	58%	65%	32%	36%
Liverpool	4.8	4.9	5	6.8	36%	60%	61%	60%	86%
Manchester	10.5	7.4	6.3	6.8	8%	85%	54%	42%	46%
Cornwall UA	5.7	6.1	6.2	6.3	1%	41%	44%	43%	44%
Bristol UA	7.2	7.1	7.6	5.8	-23%	72%	66%	64%	44%
Leeds	5.6	6.2	6.3	5.7	-10%	48%	48%	50%	45%
Norwich	3.2	3.5	5.2	5.6	8%	98%	101%	66%	66%
Bournemouth UA	4.2	4.8	6.1	5.3	-13%	52%	58%	74%	62%
Essex	5.3	6.2	5.4	5	-8%	110%	141%	121%	111%
Cheshire West and Chester UA	3.5	4.4	4.7	4.6	-1%	71%	89%	94%	87%
Sheffield	4.7	4.4	5.4	4.6	-15%	72%	64%	77%	56%
Guildford	3.9	4.2	4.6	4.6	-1%	38%	39%	43%	41%
Warwick	4.4	4.8	4.3	4.5	4%	79%	81%	77%	76%
Portsmouth UA	4.5	4.1	4.3	4.5	3%	73%	68%	71%	67%
Surrey	3.6	5.9	9.5	4.4	-53%	178%	127%	112%	70%
Canterbury	4.4	4.2	4.2	4.3	3%	67%	62%	60%	58%
Total excluding London	498.6	496.4	507.8	489.2	-4%	62%	61%	60%	57%

5. Surpluses

Table 6a and 6b show the surpluses for on- and off-street parking before and after capital charges and the changes over the past four years.

London councils made a combined surplus of £296 million in 2013/14 before capital charges, 17% higher than in 2012/13 as a result of lower costs. In the rest of England, councils made a surplus of £370 million before capital charges, an increase of 9%.

All councils in London made a surplus before capital charges in 2013/14. Westminster increased its surplus by 29% and made £51.0 million - its total penalty income (before enforcement costs) was £25 million. The top five London councils (Westminster, Kensington & Chelsea, Camden, Hammersmith & Fulham and Wandsworth) account for over 60% the total surpluses for London. Five London

councils saw reductions of up to 10% in 2013/14 compared with 2012/13 and a further five saw reductions of over 10%. Thirteen saw increases of over 10%.

The surplus after capital charges are not very different as most London councils have small capital charges because they largely relate to off-street multi-storey car parks which they do not normally run. Southwark and Barnet had large capital charges in 2011/12 and 2012/13 which brought their overall parking account into deficit. Southwark remained in deficit after capital charges in 2013/14.

Outside London, Brighton and Hove made the largest surplus and had the sixth largest surplus nationally followed by Nottingham³, which now has a very large contribution from the Workplace Parking Levy. Manchester trebled its surplus over the past four years, while Bristol's doubled.

³ Nottingham's Workplace Parking Levy generated £8 million in 2013/14 which is ring fenced for the NET tram system, Nottingham Station redevelopment and the Linkbus network. If this is excluded, Nottingham's surplus is estimated at just over £4 million, the 39th highest in England.

Table 6a Surplus from on- and off- street parking before and after capital charges for London councils

£ million	Surplus before capital charges					Surplus after capital charges				
	2010/11	2011/12	2012/13	2013/14	2013/14 as % of 2012/13	2010/11	2011/12	2012/13	2013/14	2013/14 as % of 2012/13
Westminster	38.2	41.6	39.7	51	29%	34.9	38	37.5	50.9	36%
Kensington & Chelsea	21.1	28.1	30.4	33.5	10%	20.9	27.5	30.2	33.2	10%
Camden	21.1	25	23.5	24.9	6%	21	24.8	23.4	24.8	6%
Hammersmith & Fulham	16.6	19.5	19.4	23	18%	16.2	19.1	19	22.5	19%
Wandsworth	14.4	16.1	15.9	19.7	24%	9	16.1	15.9	19.7	24%
Islington	5.6	10.9	8.2	10.4	26%	4.9	10.2	7.5	9.7	29%
Tower Hamlets	6	5.8	7	8.3	19%	6	5.8	7	8.3	19%
Brent	3.9	2.7	2.7	8.3	212%	3.8	2.6	2.5	8.2	234%
Hackney	4.7	5.9	7.8	8.2	6%	4.5	5.7	7.6	8.2	9%
Barnet	1.3	0.2	0.8	7.9	869%	0.7	-4.7	-2.5	7.5	-400%
Hounslow	6	7.3	6.4	7.8	22%	5.7	5.3	5.8	6.9	17%
Lambeth	7	5.8	12	7.2	-40%	6.2	5.7	10.7	7.2	-33%
Newham	3.9	7.3	8.2	7.2	-12%	3.6	7.2	8	7.1	-12%
Richmond upon Thames	5.2	4.1	6.1	7	15%	4.8	3.8	5.8	6.6	15%
Merton	4.4	5.7	6.9	7	2%	4.4	5.2	6.8	6.9	2%
Harrow	4.7	4.6	6.5	6.4	-1%	4.4	4.3	6.1	5.8	-6%
Kingston upon Thames	2.8	4.7	5.7	5.8	2%	0.8	3.5	1.8	5.3	202%
Haringey	3.3	5.3	5.2	5.7	9%	3.3	5.3	5.2	5	-5%
Bromley	4.4	4.7	5.7	5.6	-2%	4.3	3.6	4.4	5.2	18%
City of London	3.2	4.3	3.8	5.6	47%	3	4.1	3.6	4.7	32%
Lewisham	3	4.6	4.9	5.3	8%	2.8	4.4	4.9	5.1	4%
Ealing	4	4.5	4.2	4.7	12%	3.6	4.1	2.4	4.5	90%
Southwark	2.6	2.9	1.6	4	142%	-0.8	-3.3	-5	-2.8	-45%
Redbridge	3.5	3.9	4	3.8	-5%	3.3	3.8	3.9	3.7	-6%
Waltham Forest	2	3.1	2.2	3.2	45%	1.9	3.1	2	3	49%
Croydon	4.5	2.1	2.6	3.1	21%	4.2	1.4	2.2	2.6	20%
Enfield	2.6	3.1	3.2	2.7	-16%	2.6	3.1	2.7	2.4	-11%
Barking & Dagenham	1.3	1.7	2.3	2.1	-5%	0.6	1.6	2.1	1.9	-12%
Greenwich	1.5	2	2.2	2	-10%	1.6	2	1.6	1.6	-1%
Sutton	1.6	1.7	1.7	1.8	8%	1.2	1.4	1.4	1	-32%
Bexley	1.3	1.6	1.8	1.7	-8%	1.2	1.6	1.7	1.6	-8%
Hillingdon	1.4	1.4	1.4	1.2	-12%	0.6	0.7	0.9	0.8	-18%
Havering	-0.1	0.7	0.7	0.4	-37%	0.2	0.6	-1.1	0.3	-124%
London	207.3	242.7	254.4	296.4	17%	185.2	217.5	226	279.4	24%

Table 6b Surplus from on- and off- street parking before and after capital charges for top 20 councils outside London

£ million	Surplus before capital charges					Surplus after capital charges				
	2010/11	2011/12	2012/13	2013/14	2013/14 as % of 2012/13	2010/11	2011/12	2012/13	2013/14	2013/14 as % of 2012/13
Brighton & Hove UA	12.7	14.4	16.3	18.1	11%	11.5	13.7	14.5	17.3	20%
City of Nottingham UA	3.7	3.3	11.8	12.1	2%	2.9	2.3	10.1	11	10%
Milton Keynes UA	6	6.6	6.7	8.2	22%	5.9	6.5	6.5	8.1	26%
Manchester	1.9	6.3	8.8	8	9%	-7.8	6	7.8	7.7	1%
Cornwall UA	8.2	7.9	8.1	8	1%	6	-5.7	-1.6	7.3	568%
Birmingham	5.1	5.5	6.9	7.8	13%	3.5	3.8	5.2	6.1	17%
Bristol UA	2.7	3.7	4.2	7.5	78%	2.7	3.6	4.1	7	69%
Leeds	6	6.8	6.2	6.9	10%	5.1	5.5	3	6.1	104%
Guildford	6.3	6.5	6.3	6.5	4%	5.4	5.6	5.5	5.7	4%
Newcastle upon Tyne	4.6	6.7	6.3	6.3	0%	4.1	6.2	5.9	6	2%
Bath & North East Somerset UA	6.6	5.1	5.3	6.1	15%	3.3	4.8	5	5.9	17%
Cambridge	4.4	4.8	4.7	5.1	9%	0.4	4.1	4	3.2	19%
York UA	4.5	4.8	5.1	4.8	7%	4.2	4.5	4.9	4.6	6%
Oxford	3.9	4.3	4.6	4.8	4%	2.7	3.1	-1.7	4.1	338%
Wiltshire UA	4.3	5	4.7	4.4	7%	1.1	3.9	3.7	0	101%
Southampton UA	2.7	2.8	3.4	4.2	24%	-2.5	1.4	2.8	2.2	21%
Woking	3.9	3.5	3.6	4	11%	5.5	2	2.2	3.1	40%
Exeter	3	3.5	3.6	3.9	8%	2.3	3.1	2.9	3.6	27%
Winchester	2.8	3.1	3.6	3.7	3%	1.2	2.8	3.4	3.5	3%
Chelmsford	3.3	3	3.3	3.6	10%	0.7	1.3	2.7	3	12%
Total excluding London	304.3	322.7	340	370.2	9%	172.8	193.9	234.4	269.9	15%

DCLG also publishes councils' budget figures for the current year but only shows net surplus before and after capital charges. Table 7 shows the biggest changes in these, both positive and negative. (Note several councils with large surpluses did not make any return – Greenwich, Lewisham, Sevenoaks and Watford.)

Table 7 Largest differences between parking surplus before capital charge in 2013/14 actual and 2014/15 budget

£ million	2013/14 actual	2014/15 budget	Difference
Biggest rises			
Ealing	4.7	9.9	5.1
Haringey	5.7	8.9	3.2
Liverpool	1.1	3.5	2.4
Islington	10.4	12.6	2.2
Cheshire East UA	2.2	4.4	2.2
Croydon	3.1	4.7	1.5
Wolverhampton	-0.4	1.1	1.5
Barking & Dagenham	2.1	3.5	1.4
Tameside	0.8	2.1	1.3
York UA	4.8	5.9	1.1
Buckinghamshire	-0.4	0.7	1.1
City of Nottingham UA	12.1	13.1	1.1
Blackpool UA	2.7	3.8	1.1
Birmingham	7.8	8.8	1
Biggest declines			
Redbridge	3.8	2.8	-1
City of London	5.6	4.3	-1.2
Southampton UA	4.2	3	-1.3
North Yorkshire	0.7	-0.6	-1.3
North Tyneside	2	0.7	-1.3
Devon	1.6	0.1	-1.5
Brighton & Hove UA	18.1	16.5	-1.6
Manchester	8	6.4	-1.7
Northumberland UA	1.1	-0.6	-1.7
Leicester City UA	2.5	0.5	-2
Oxfordshire	1.9	-0.3	-2.2
Kensington & Chelsea	33.5	31.2	-2.3
Lambeth	7.2	4.9	-2.3
Plymouth UA	2.8	0.5	-2.4
Hammersmith & Fulham	23	20.5	-2.5
Surrey	1.9	-1	-2.9
Westminster	51	46.7	-4.3
Hackney	8.2	3.7	-4.5
Barnet	7.9	1.7	-6.2

6. Do Councils “make money” from Parking?

In response to last year’s RAC Foundation analysis, the Local Government Information Unit (part of the Local Government Association, which represents councils in England outside London) ran a survey from November to December 2013⁴ which sought to understand the state of traffic regulation and the key successes and challenges around the issue. 71 councils responded (20% of English councils), representing a cross section of different types of authorities and replies were received from both Council members and officers.

The survey showed that 20% of respondents reported making surplus income on enforcement while for the majority (80%) income from enforcement either solely covers the cost of enforcement (50%) or did not cover the cost of enforcement at all (30%). The LGA reported that “this contrasts sharply with previous analysis from the RAC Foundation.”

In 2013/14, 292 councils (83%) showed a surplus on their total parking account, 6 showed nil and 55 (16%) showed deficits before capital charges. Considering capital charges, 64 councils made deficits (18%). Total surpluses before capital charges amounted to £675m, while deficits amounted to £8m.

The data councils provide to DCLG only show the on-street penalty income, not the off-street penalty income, and do not present the enforcement costs separately from the total cost of on-street management which includes collection of parking fees, maintenance of meters, installing and maintaining lines and signs, making traffic orders etc. 199 councils (56%) report on-street penalty income - of these 24% show that the income from on-street penalties exceeds the *total* costs of on-street parking management. So without additional data, it is not possible to confirm the LGA’s report that most councils do not make money from enforcement, but the majority certainly make overall surpluses from parking, which legitimately go towards the costs of other transport activities which councils are legally obliged to provide.

David Leibling

December 2014

⁴ <http://www.lgiu.org.uk/wp-content/uploads/2014/02/Councils-in-the-driving-seat-Local-authorities-and-traffic-enforcement.pdf>

ANNEXES

Local Authority Parking Operations Revenue Outturn for England by alphabetical order (Current account surplus excluding capital charges. Source: Council returns to DCLG)

Annex A: Alphabetical

London boroughs	L
Metropolitan districts	MD
Shire districts	SD
Unitary authorities	UA

Local authority	Class	2010-11	2011-12	2012-13	2013-14	Ranking by 2013-14 surplus
		£ thousands				
Adur	SD	182	112	106	68	284
Allerdale	SD	1,185	1,017	939	1,206	126
Amber Valley	SD	156	254	249	280	241
Arun	SD	382	394	474	174	266
Ashfield	SD	-52	-35	-17	98	278
Ashford	SD	645	708	581	720	180
Aylesbury Vale	SD	393	604	544	686	181
Babergh	SD	-181	-170	-116	-109	327
Barking & Dagenham	L	1,325	1,677	2,261	2,147	78
Barnet	L	1,307	-156	813	7,879	15
Barnsley	MD	981	552	687	792	171
Barrow-in-Furness	SD	457	543	529	524	203
Basildon	SD	205	-129	-22	2	292
Basingstoke & Deane	SD	936	1,180	958	1,117	137
Bassetlaw	SD	275	220	233	362	224
Bath & North East Somerset UA	UA	6,611	5,107	5,348	6,146	27
Bedford UA	UA	-58	102	562	641	186
Bexley	L	1,252	1,629	1,795	1,652	102
Birmingham	MD	5,096	5,479	6,869	7,756	17
Blaby	SD	-81	-77	-31	-39	305
Blackburn with Darwen UA	UA	54	203	80	105	276
Blackpool UA	UA	3,072	3,582	2,905	2,719	61
Bolsover	SD	0	0	0	0	293
Bolton	MD	1,111	1,324	813	626	189
Boston	SD	723	582	583	635	187
Bournemouth UA	UA	3,821	3,430	2,118	3,214	50
Bracknell Forest UA	UA	537	104	28	-37	304
Bradford	MD	1,426	1,080	2,629	1,127	135
Braintree	SD	531	539	451	522	205
Breckland	SD	-8	-139	-193	-162	337
Brent	L	3,926	2,701	2,666	8,310	10
Brentwood	SD	936	-372	651	805	169
Brighton & Hove UA	UA	12,744	14,436	16,254	18,090	6
Bristol UA	UA	2,745	3,673	4,222	7,495	18
Broadland	SD	-22	-22	-23	-19	301
Bromley	L	4,443	4,736	5,685	5,570	30
Bromsgrove	SD	706	688	581	587	193

Broxbourne	SD	746	307	197	222	254
Broxtowe	SD	-249	-139	-83	-77	318
Buckinghamshire	SC	-110	-23	-692	-424	351
Burnley	SD	326	321	286	263	245
Bury	MD	1,476	1,232	1,173	947	156
Calderdale	MD	1,024	1,298	1,157	1,027	150
Cambridge	SD	4,415	4,756	4,693	5,109	33
Cambridgeshire	SC	235	367	290	592	192
Camden	L	21,067	24,975	23,531	24,869	3
Cannock Chase	SD	228	368	168	226	253
Canterbury	SD	2,164	2,564	2,729	3,113	52
Carlisle	SD	837	683	569	510	206
Castle Point	SD	353	388	364	279	242
Central Bedfordshire UA	UA	16	0	457	160	268
Charnwood	SD	465	472	445	431	211
Chelmsford	SD	3,330	3,028	3,284	3,619	44
Cheltenham	SD	2,466	2,421	2,355	2,352	73
Cherwell	SD	0	0	1,254	1,197	129
Cheshire East UA	UA	2,456	2,524	2,072	2,214	76
Cheshire West and Chester UA	UA	1,447	545	304	684	182
Chesterfield	SD	1,309	1,262	1,027	1,020	151
Chichester	SD	2,548	2,546	3,137	3,265	49
Chiltern	SD	625	673	897	925	158
Chorley	SD	405	601	494	444	208
Christchurch	SD	1,440	1,504	1,682	1,820	94
City of London	L	3,238	4,342	3,793	5,569	31
Colchester	SD	2,043	1,740	1,725	1,210	124
Copeland	SD	-110	200	226	188	260
Corby	SD	45	-5	129	146	271
Cornwall UA	UA	8,221	7,926	8,078	8,019	14
Cotswold	SD	1,523	1,604	1,531	1,447	114
County Durham UA	UA	412	383	111	-159	336
Coventry	MD	2,465	1,604	-964	3,270	48
Craven	SD	1,015	1,019	974	1,031	149
Crawley	SD	14	-229	-261	32	287
Croydon	L	4,466	2,129	2,580	3,113	53
Cumbria	SC	-176	-214	-340	-338	347
Dacorum	SD	390	558	498	538	201
Darlington UA	UA	1,151	1,345	1,468	1,570	106
Dartford	SD	-31	12	165	64	285
Daventry	SD	-158	-148	-168	-155	333
Derby City UA	UA	1,577	1,672	2,034	1,458	113
Derbyshire	SC	39	125	128	-258	342
Derbyshire Dales	SD	1,437	1,538	1,426	1,505	111
Devon	SC	50	594	194	1,592	105
Doncaster	MD	470	296	117	0	294
Dorset	SC	-91	23	134	196	258
Dover	SD	719	1,040	1,024	877	162
Dudley	MD	490	283	409	293	239
Ealing	L	4,002	4,485	4,189	4,709	36
East Cambridgeshire	SD	-105	-184	-154	-95	325
East Devon	SD	2,184	2,321	1,740	1,930	85

East Dorset	SD	172	128	176	238	249
East Hampshire	SD	769	760	826	947	157
East Hertfordshire	SD	956	831	886	1,258	122
East Lindsey	SD	1,772	1,464	1,409	1,690	99
East Northamptonshire	SD	-71	-67	-67	-73	314
East Riding of Yorkshire UA	UA	1,310	645	800	920	159
East Staffordshire	SD	1,108	1,000	855	774	174
East Sussex	SC	661	358	762	1,088	141
Eastbourne	SD	289	282	266	272	244
Eastleigh	SD	1,177	1,415	1,674	1,385	119
Eden	SD	146	212	151	89	280
Elmbridge	SD	1,086	1,152	1,123	1,420	116
Enfield	L	2,586	3,100	3,166	2,667	66
Epping Forest	SD	501	379	319	362	225
Epsom & Ewell	SD	1,372	1,458	1,739	1,655	100
Erewash	SD	400	364	236	221	255
Essex	SC	-469	-1,802	-936	-486	353
Exeter	SD	3,048	3,453	3,645	3,935	41
Fareham	SD	1,474	1,433	1,234	1,098	138
Fenland	SD	-270	-331	-272	-297	343
Forest Heath	SD	111	118	166	71	283
Forest of Dean	SD	-87	-183	-32	15	291
Fylde	SD	247	261	255	303	237
Gateshead	MD	62	72	328	279	243
Gedling	SD	128	-241	-206	-155	334
Gloucester	SD	1,193	984	907	989	153
Gloucestershire	SC	1,554	1,591	1,573	1,775	98
Gosport	SD	247	359	346	408	213
Gravesham	SD	679	917	913	1,177	132
Great Yarmouth	SD	359	345	296	548	197
Greenwich	L	1,462	2,013	2,161	1,950	84
Guildford	SD	6,282	6,538	6,266	6,519	24
Hackney	L	4,683	5,892	7,756	8,219	11
Halton UA	UA	-90	-78	-100	-58	307
Hambleton	SD	136	181	164	247	248
Hammersmith & Fulham	L	16,649	19,504	19,395	22,960	4
Hampshire	SC	73	74	96	96	279
Harborough	SD	389	476	459	404	214
Haringey	L	3,268	5,334	5,213	5,700	29
Harlow	SD	313	232	245	308	236
Harrogate	SD	1,956	1,689	1,839	1,969	83
Harrow	L	4,722	4,601	6,485	6,449	25
Hart	SD	345	408	246	395	217
Hartlepool UA	UA	510	445	346	342	231
Hastings	SD	1,438	1,456	576	617	190
Havant	SD	299	325	499	438	210
Havering	L	140	703	676	424	212
Herefordshire UA	UA	863	1,355	1,563	1,880	89
Hertfordshire	SC	0	0	0	0	295
Hertsmere	SD	-97	-73	61	141	272
High Peak	SD	605	717	586	743	177
Hillingdon	L	1,446	1,420	1,365	1,196	130

Hinckley & Bosworth	SD	204	267	228	231	250
Horsham	SD	1,318	1,272	1,516	1,874	90
Hounslow	L	5,988	7,255	6,407	7,814	16
Huntingdonshire	SD	727	387	733	863	163
Hyndburn	SD	-107	-94	-62	-156	335
Ipswich	SD	726	880	881	979	154
Isle of Wight UA	UA	2,537	2,443	2,308	2,334	74
Isles of Scilly	UA	0	0	0	0	296
Islington	L	5,600	10,890	8,216	10,381	8
Kensington & Chelsea	L	21,130	28,148	30,437	33,512	2
Kent	SC	0	0	0	0	297
Kettering	SD	407	387	341	354	227
King's Lynn & West Norfolk	SD	2,753	2,520	2,785	2,777	60
Kingston upon Hull UA	UA	1,190	1,682	1,906	1,913	86
Kingston upon Thames	L	2,782	4,675	5,651	5,752	28
Kirklees	MD	2,434	2,976	1,493	2,043	81
Knowsley	MD	-410	626	524	230	252
Lambeth	L	7,016	5,831	12,004	7,219	19
Lancashire	SC	-253	-269	-334	-90	323
Lancaster	SD	1,603	1,624	1,528	1,613	104
Leeds	MD	6,044	6,824	6,244	6,894	23
Leicester City UA	UA	633	673	2,362	2,490	69
Leicestershire	SC	-314	-277	99	-70	312
Lewes	SD	334	298	252	315	235
Lewisham	L	2,991	4,603	4,886	5,265	32
Lichfield	SD	1,152	1,078	1,016	1,063	148
Lincoln	SD	2,407	2,451	2,308	2,176	77
Lincolnshire	SC	0	0	-28	131	274
Liverpool	MD	3,145	3,147	3,325	1,092	140
Luton UA	UA	847	687	1,218	1,320	121
Maidstone	SD	495	557	1,304	1,164	133
Maldon	SD	215	312	305	300	238
Malvern Hills	SD	128	86	96	-90	324
Manchester	MD	1,914	6,325	8,776	8,020	13
Mansfield	SD	414	595	280	352	228
Melton	SD	294	307	328	327	232
Mendip	SD	1,161	1,210	1,128	892	161
Merton	L	4,427	5,679	6,868	7,015	22
Mid Devon	SD	234	185	244	357	226
Mid Suffolk	SD	424	443	447	363	223
Mid Sussex	SD	843	855	1,014	1,122	136
Middlesborough UA	UA	462	640	561	179	263
Milton Keynes UA	UA	6,024	6,606	6,668	8,160	12
Mole Valley	SD	850	845	848	1,006	152
New Forest	SD	974	961	1,202	1,210	125
Newark & Sherwood	SD	479	730	557	658	184
Newcastle upon Tyne	MD	4,559	6,707	6,275	6,296	26
Newcastle-under-Lyme	SD	648	678	745	778	173
Newham	L	3,861	7,316	8,163	7,202	20
Norfolk	SC	-872	-362	42	-17	300
North Devon	SD	1,840	1,792	1,619	1,655	101
North Dorset	SD	298	307	327	316	234

North East Derbyshire	SD	32	-54	-85	-70	313
North East Lincolnshire UA	UA	0	528	1,230	949	155
North Hertfordshire	SD	464	410	578	822	166
North Kesteven	SD	101	101	127	148	270
North Lincolnshire UA	UA	-1,288	801	697	568	194
North Norfolk	SD	1,136	1,232	1,437	1,550	107
North Somerset UA	UA	1,097	1,208	575	1,235	123
North Tyneside	MD	573	813	1,341	2,041	82
North Warwickshire	SD	-58	-56	-41	-60	309
North West Leicestershire	SD	106	89	39	24	288
North Yorkshire	SC	0	2,165	564	736	178
Northampton	SD	2,438	1,398	1,530	1,154	134
Northamptonshire	SC	-230	-127	-41	-87	322
Northumberland UA	UA	1,740	1,829	1,124	1,081	142
Norwich	SD	67	-36	2,722	2,838	55
Nottingham City UA	UA	3,661	3,251	11,791	12,064	7
Nottinghamshire	SC	-523	12	-307	24	289
Nuneaton & Bedworth	SD	802	1,041	904	1,067	147
Oadby & Wigston	SD	-117	-123	-114	-119	329
Oldham	MD	295	224	134	168	267
Oxford	SD	3,918	4,267	4,560	4,755	35
Oxfordshire	SC	-45	916	1,488	1,900	88
Pendle	SD	-106	-41	-41	-46	306
Peterborough UA	UA	1,581	1,953	1,934	1,780	97
Plymouth UA	UA	409	458	2,983	2,827	56
Poole UA	UA	2,661	2,540	2,373	2,500	68
Portsmouth UA	UA	1,700	1,986	1,770	2,232	75
Preston	SD	971	716	764	790	172
Purbeck	SD	151	129	128	157	269
Reading UA	UA	1,732	1,749	2,114	2,671	65
Redbridge	L	3,498	3,922	4,038	3,822	42
Redcar & Cleveland UA	UA	0	0	740	766	175
Redditch	SD	-40	-58	-76	-81	320
Reigate & Banstead	SD	545	459	976	1,387	118
Ribble Valley	SD	114	111	119	112	275
Richmond upon Thames	L	5,160	4,116	6,108	7,040	21
Richmondshire	SD	163	129	118	177	264
Rochdale	MD	453	623	156	-66	311
Rochford	SD	566	526	444	660	183
Rossendale	SD	-54	-51	-59	-60	310
Rother	SD	576	745	754	839	165
Rotherham	MD	247	352	438	345	230
Rugby	SD	318	391	311	376	221
Runnymede	SD	220	221	434	611	191
Rushcliffe	SD	274	261	242	282	240
Rushmoor	SD	1,777	2,006	1,974	1,518	110
Rutland UA	UA	123	138	176	197	257
Ryedale	SD	470	488	460	544	199
Salford	MD	-309	510	80	-162	338
Sandwell	MD	49	-48	-17	180	262
Scarborough	SD	3,439	3,314	3,119	3,515	46
Sedgemoor	SD	609	624	541	627	188

Sefton	MD	1,172	1,507	1,405	1,440	115
Selby	SD	147	160	172	195	259
Sevenoaks	SD	1,431	1,568	1,473	1,641	103
Sheffield	MD	1,793	2,493	1,649	3,535	45
Shepway	SD	141	40	309	397	216
Shropshire UA	UA	2,297	2,629	2,334	2,692	64
Slough UA	UA	-157	137	-223	-230	341
Solihull	MD	2,502	2,003	1,678	1,856	92
Somerset	SC	0	187	22	-117	328
South Bucks	SD	587	536	551	546	198
South Cambridgeshire	SD	-36	-39	0	-58	308
South Derbyshire	SD	-60	-65	-55	-77	319
South Gloucestershire UA	UA	-471	-578	-535	-442	352
South Hams	SD	1,756	1,717	1,643	1,539	108
South Holland	SD	77	90	68	50	286
South Kesteven	SD	715	619	545	542	200
South Lakeland	SD	2,167	2,443	2,452	2,363	72
South Norfolk	SD	-73	-75	-44	-26	302
South Northamptonshire	SD	-56	-4	-7	-7	299
South Oxfordshire	SD	342	427	432	524	204
South Ribble	SD	-2	-59	-59	-34	303
South Somerset	SD	1,138	1,135	947	1,070	145
South Staffordshire	SD	-80	-64	-82	-76	315
South Tyneside	MD	415	618	467	231	251
Southampton UA	UA	2,688	2,830	3,420	4,245	38
Southend-on-Sea UA	UA	2,452	3,364	3,126	3,450	47
Southwark	L	2,646	2,894	1,637	3,956	40
Spelthorne	SD	673	678	581	403	215
St Albans	SD	1,524	1,461	1,274	1,472	112
St Edmundsbury	SD	1,990	2,175	2,476	2,619	67
St Helens	MD	644	377	122	24	290
Stafford	SD	791	384	777	452	207
Staffordshire	SC	-18	277	-108	84	282
Staffordshire Moorlands	SD	93	44	94	134	273
Stevenage	SD	1,795	1,829	1,916	2,133	79
Stockport	MD	1,160	1,361	1,413	1,367	120
Stockton-on-Tees UA	UA	79	5	96	86	281
Stoke-on-Trent UA	UA	2,061	1,440	950	1,070	146
Stratford-on-Avon	SD	939	1,143	996	1,097	139
Stroud	SD	116	217	202	175	265
Suffolk	SC	726	0	0	0	298
Suffolk Coastal	SD	668	652	802	794	170
Sunderland	MD	-394	-362	-306	-383	348
Surrey	SC	-1,599	-1,267	-1,047	1,911	87
Surrey Heath	SD	9	-3	634	439	209
Sutton	L	1,621	1,660	1,707	1,849	93
Swale	SD	544	840	862	815	167
Swindon UA	UA	2,195	1,931	2,135	2,473	70
Tameside	MD	302	893	955	810	168
Tamworth	SD	832	798	771	726	179
Tandridge	SD	-77	-61	-63	-103	326
Taunton Deane	SD	2,444	2,345	2,255	2,700	63

Teignbridge	SD	2,022	1,823	1,789	2,046	80
Telford and the Wrekin UA	UA	7	-123	-138	-131	331
Tendring	SD	265	193	-70	-82	321
Test Valley	SD	1,073	1,048	1,194	1,198	128
Tewkesbury	SD	308	57	264	367	222
Thanet	SD	431	202	234	393	218
The Medway Towns UA	UA	2,010	2,090	2,917	2,714	62
Three Rivers	SD	-153	-169	-87	-162	339
Thurrock UA	UA	93	42	11	-323	345
Tonbridge & Malling	SD	685	744	790	843	164
Torbay UA	UA	2,751	3,028	3,348	3,097	54
Torridge	SD	589	610	512	646	185
Tower Hamlets	L	5,956	5,769	7,000	8,318	9
Trafford	MD	491	412	358	183	261
Tunbridge Wells	SD	2,356	2,490	3,170	2,824	57
Uttlesford	SD	443	420	510	560	195
Vale of White Horse	SD	91	90	-43	-76	316
Wakefield	MD	1,651	1,323	1,000	1,182	131
Walsall	MD	-89	-209	-286	-129	330
Waltham Forest	L	2,043	3,146	2,174	3,152	51
Wandsworth	L	14,429	16,120	15,887	19,692	5
Warrington UA	UA	-206	-243	-147	-76	317
Warwick	SD	1,190	1,094	1,300	1,402	117
Warwickshire	SC	601	845	347	558	196
Watford	SD	813	1,003	994	215	256
Waveney	SD	964	901	769	757	176
Waverley	SD	2,343	2,282	2,382	2,462	71
Wealden	SD	-317	-301	-404	-328	346
Wellingborough	SD	-340	-284	-360	-316	344
Welwyn Hatfield	SD	374	282	175	262	246
West Berkshire UA	UA	865	890	1,319	1,536	109
West Devon	SD	428	354	397	380	220
West Dorset	SD	1,574	1,562	1,233	1,787	96
West Lancashire	SD	373	419	370	349	229
West Lindsey	SD	-167	-169	-69	-197	340
West Oxfordshire	SD	-134	-133	-117	-142	332
West Somerset	SD	400	334	254	248	247
West Sussex	SC	-360	497	-475	-420	349
Westminster	L	38,196	41,599	39,705	51,037	1
Weymouth & Portland	SD	2,030	1,740	1,461	1,811	95
Wigan	MD	476	720	797	1,078	144
Wiltshire UA	UA	4,326	4,952	4,670	4,350	37
Winchester	SD	2,839	3,083	3,635	3,734	43
Windsor & Maidenhead UA	UA	2,207	2,253	2,604	2,783	59
Wirral	MD	1,393	868	851	1,201	127
Woking	SD	3,915	3,527	3,611	4,003	39
Wokingham UA	UA	479	633	714	914	160
Wolverhampton	MD	1,543	1,106	930	-421	350
Worcester	SD	2,170	2,336	2,073	2,818	58
Worcestershire	SC	-30	36	143	100	277
Worthing	SD	545	974	1,011	536	202
Wychavon	SD	1,327	1,397	1,489	1,867	91

Wycombe	SD	905	1,001	974	1,079	143
Wyre	SD	477	388	310	319	233
Wyre Forest	SD	512	442	421	388	219
York UA	UA	4,471	4,763	5,125	4,780	34

**Local Authority Parking Operations Revenue Outturn for England by level of surplus
(Current account surplus excluding capital costs. Source: Council returns to DCLG)**

Annex B: In descending order of surplus

London boroughs	L
Metropolitan districts	MD
Shire districts	SD
Unitary authorities	UA

Local authority	Class	2010-11	2011-12	2012-13	2013-14	Ranking by 2013-14 surplus
		£ thousands				
Westminster	L	38,196	41,599	39,705	51,037	1
Kensington & Chelsea	L	21,130	28,148	30,437	33,512	2
Camden	L	21,067	24,975	23,531	24,869	3
Hammersmith & Fulham	L	16,649	19,504	19,395	22,960	4
Wandsworth	L	14,429	16,120	15,887	19,692	5
Brighton & Hove UA	UA	12,744	14,436	16,254	18,090	6
Nottingham City UA	UA	3,661	3,251	11,791	12,064	7
Islington	L	5,600	10,890	8,216	10,381	8
Tower Hamlets	L	5,956	5,769	7,000	8,318	9
Brent	L	3,926	2,701	2,666	8,310	10
Hackney	L	4,683	5,892	7,756	8,219	11
Milton Keynes UA	UA	6,024	6,606	6,668	8,160	12
Manchester	MD	1,914	6,325	8,776	8,020	13
Cornwall UA	UA	8,221	7,926	8,078	8,019	14
Barnet	L	1,307	-156	813	7,879	15
Hounslow	L	5,988	7,255	6,407	7,814	16
Birmingham	MD	5,096	5,479	6,869	7,756	17
Bristol UA	UA	2,745	3,673	4,222	7,495	18
Lambeth	L	7,016	5,831	12,004	7,219	19

Newham	L	3,861	7,316	8,163	7,202	20
Richmond upon Thames	L	5,160	4,116	6,108	7,040	21
Merton	L	4,427	5,679	6,868	7,015	22
Leeds	MD	6,044	6,824	6,244	6,894	23
Guildford	SD	6,282	6,538	6,266	6,519	24
Harrow	L	4,722	4,601	6,485	6,449	25
Newcastle upon Tyne	MD	4,559	6,707	6,275	6,296	26
Bath & North East Somerset UA	UA	6,611	5,107	5,348	6,146	27
Kingston upon Thames	L	2,782	4,675	5,651	5,752	28
Haringey	L	3,268	5,334	5,213	5,700	29
Bromley	L	4,443	4,736	5,685	5,570	30
City of London	L	3,238	4,342	3,793	5,569	31
Lewisham	L	2,991	4,603	4,886	5,265	32
Cambridge	SD	4,415	4,756	4,693	5,109	33
York UA	UA	4,471	4,763	5,125	4,780	34
Oxford	SD	3,918	4,267	4,560	4,755	35
Ealing	L	4,002	4,485	4,189	4,709	36
Wiltshire UA	UA	4,326	4,952	4,670	4,350	37
Southampton UA	UA	2,688	2,830	3,420	4,245	38
Woking	SD	3,915	3,527	3,611	4,003	39
Southwark	L	2,646	2,894	1,637	3,956	40
Exeter	SD	3,048	3,453	3,645	3,935	41
Redbridge	L	3,498	3,922	4,038	3,822	42
Winchester	SD	2,839	3,083	3,635	3,734	43
Chelmsford	SD	3,330	3,028	3,284	3,619	44
Sheffield	MD	1,793	2,493	1,649	3,535	45
Scarborough	SD	3,439	3,314	3,119	3,515	46
Southend-on-Sea UA	UA	2,452	3,364	3,126	3,450	47
Coventry	MD	2,465	1,604	-964	3,270	48
Chichester	SD	2,548	2,546	3,137	3,265	49
Bournemouth UA	UA	3,821	3,430	2,118	3,214	50
Waltham Forest	L	2,043	3,146	2,174	3,152	51
Canterbury	SD	2,164	2,564	2,729	3,113	52
Croydon	L	4,466	2,129	2,580	3,113	53
Torbay UA	UA	2,751	3,028	3,348	3,097	54
Norwich	SD	67	-36	2,722	2,838	55
Plymouth UA	UA	409	458	2,983	2,827	56
Tunbridge Wells	SD	2,356	2,490	3,170	2,824	57
Worcester	SD	2,170	2,336	2,073	2,818	58
Windsor & Maidenhead UA	UA	2,207	2,253	2,604	2,783	59
King's Lynn & West Norfolk	SD	2,753	2,520	2,785	2,777	60
Blackpool UA	UA	3,072	3,582	2,905	2,719	61
The Medway Towns UA	UA	2,010	2,090	2,917	2,714	62
Taunton Deane	SD	2,444	2,345	2,255	2,700	63
Shropshire UA	UA	2,297	2,629	2,334	2,692	64
Reading UA	UA	1,732	1,749	2,114	2,671	65
Enfield	L	2,586	3,100	3,166	2,667	66
St Edmundsbury	SD	1,990	2,175	2,476	2,619	67
Poole UA	UA	2,661	2,540	2,373	2,500	68
Leicester City UA	UA	633	673	2,362	2,490	69

Swindon UA	UA	2,195	1,931	2,135	2,473	70
Waverley	SD	2,343	2,282	2,382	2,462	71
South Lakeland	SD	2,167	2,443	2,452	2,363	72
Cheltenham	SD	2,466	2,421	2,355	2,352	73
Isle of Wight UA	UA	2,537	2,443	2,308	2,334	74
Portsmouth UA	UA	1,700	1,986	1,770	2,232	75
Cheshire East UA	UA	2,456	2,524	2,072	2,214	76
Lincoln	SD	2,407	2,451	2,308	2,176	77
Barking & Dagenham	L	1,325	1,677	2,261	2,147	78
Stevenage	SD	1,795	1,829	1,916	2,133	79
Teignbridge	SD	2,022	1,823	1,789	2,046	80
Kirklees	MD	2,434	2,976	1,493	2,043	81
North Tyneside	MD	573	813	1,341	2,041	82
Harrogate	SD	1,956	1,689	1,839	1,969	83
Greenwich	L	1,462	2,013	2,161	1,950	84
East Devon	SD	2,184	2,321	1,740	1,930	85
Kingston upon Hull UA	UA	1,190	1,682	1,906	1,913	86
Surrey	SC	-1,599	-1,267	-1,047	1,911	87
Oxfordshire	SC	-45	916	1,488	1,900	88
Herefordshire UA	UA	863	1,355	1,563	1,880	89
Horsham	SD	1,318	1,272	1,516	1,874	90
Wychavon	SD	1,327	1,397	1,489	1,867	91
Solihull	MD	2,502	2,003	1,678	1,856	92
Sutton	L	1,621	1,660	1,707	1,849	93
Christchurch	SD	1,440	1,504	1,682	1,820	94
Weymouth & Portland	SD	2,030	1,740	1,461	1,811	95
West Dorset	SD	1,574	1,562	1,233	1,787	96
Peterborough UA	UA	1,581	1,953	1,934	1,780	97
Gloucestershire	SC	1,554	1,591	1,573	1,775	98
East Lindsey	SD	1,772	1,464	1,409	1,690	99
Epsom & Ewell	SD	1,372	1,458	1,739	1,655	100
North Devon	SD	1,840	1,792	1,619	1,655	101
Bexley	L	1,252	1,629	1,795	1,652	102
Sevenoaks	SD	1,431	1,568	1,473	1,641	103
Lancaster	SD	1,603	1,624	1,528	1,613	104
Devon	SC	50	594	194	1,592	105
Darlington UA	UA	1,151	1,345	1,468	1,570	106
North Norfolk	SD	1,136	1,232	1,437	1,550	107
South Hams	SD	1,756	1,717	1,643	1,539	108
West Berkshire UA	UA	865	890	1,319	1,536	109
Rushmoor	SD	1,777	2,006	1,974	1,518	110
Derbyshire Dales	SD	1,437	1,538	1,426	1,505	111
St Albans	SD	1,524	1,461	1,274	1,472	112
Derby City UA	UA	1,577	1,672	2,034	1,458	113
Cotswold	SD	1,523	1,604	1,531	1,447	114
Sefton	MD	1,172	1,507	1,405	1,440	115
Elmbridge	SD	1,086	1,152	1,123	1,420	116
Warwick	SD	1,190	1,094	1,300	1,402	117
Reigate & Banstead	SD	545	459	976	1,387	118
Eastleigh	SD	1,177	1,415	1,674	1,385	119

Stockport	MD	1,160	1,361	1,413	1,367	120
Luton UA	UA	847	687	1,218	1,320	121
East Hertfordshire	SD	956	831	886	1,258	122
North Somerset UA	UA	1,097	1,208	575	1,235	123
Colchester	SD	2,043	1,740	1,725	1,210	124
New Forest	SD	974	961	1,202	1,210	125
Allerdale	SD	1,185	1,017	939	1,206	126
Wirral	MD	1,393	868	851	1,201	127
Test Valley	SD	1,073	1,048	1,194	1,198	128
Cherwell	SD	0	0	1,254	1,197	129
Hillingdon	L	1,446	1,420	1,365	1,196	130
Wakefield	MD	1,651	1,323	1,000	1,182	131
Gravesham	SD	679	917	913	1,177	132
Maidstone	SD	495	557	1,304	1,164	133
Northampton	SD	2,438	1,398	1,530	1,154	134
Bradford	MD	1,426	1,080	2,629	1,127	135
Mid Sussex	SD	843	855	1,014	1,122	136
Basingstoke & Deane	SD	936	1,180	958	1,117	137
Fareham	SD	1,474	1,433	1,234	1,098	138
Stratford-on-Avon	SD	939	1,143	996	1,097	139
Liverpool	MD	3,145	3,147	3,325	1,092	140
East Sussex	SC	661	358	762	1,088	141
Northumberland UA	UA	1,740	1,829	1,124	1,081	142
Wycombe	SD	905	1,001	974	1,079	143
Wigan	MD	476	720	797	1,078	144
South Somerset	SD	1,138	1,135	947	1,070	145
Stoke-on-Trent UA	UA	2,061	1,440	950	1,070	146
Nuneaton & Bedworth	SD	802	1,041	904	1,067	147
Lichfield	SD	1,152	1,078	1,016	1,063	148
Craven	SD	1,015	1,019	974	1,031	149
Calderdale	MD	1,024	1,298	1,157	1,027	150
Chesterfield	SD	1,309	1,262	1,027	1,020	151
Mole Valley	SD	850	845	848	1,006	152
Gloucester	SD	1,193	984	907	989	153
Ipswich	SD	726	880	881	979	154
North East Lincolnshire UA	UA	0	528	1,230	949	155
Bury	MD	1,476	1,232	1,173	947	156
East Hampshire	SD	769	760	826	947	157
Chiltern	SD	625	673	897	925	158
East Riding of Yorkshire UA	UA	1,310	645	800	920	159
Wokingham UA	UA	479	633	714	914	160
Mendip	SD	1,161	1,210	1,128	892	161
Dover	SD	719	1,040	1,024	877	162
Huntingdonshire	SD	727	387	733	863	163
Tonbridge & Malling	SD	685	744	790	843	164
Rother	SD	576	745	754	839	165
North Hertfordshire	SD	464	410	578	822	166
Swale	SD	544	840	862	815	167
Tameside	MD	302	893	955	810	168
Brentwood	SD	936	-372	651	805	169

Suffolk Coastal	SD	668	652	802	794	170
Barnsley	MD	981	552	687	792	171
Preston	SD	971	716	764	790	172
Newcastle-under-Lyme	SD	648	678	745	778	173
East Staffordshire	SD	1,108	1,000	855	774	174
Redcar & Cleveland UA	UA	0	0	740	766	175
Waveney	SD	964	901	769	757	176
High Peak	SD	605	717	586	743	177
North Yorkshire	SC	0	2,165	564	736	178
Tamworth	SD	832	798	771	726	179
Ashford	SD	645	708	581	720	180
Aylesbury Vale	SD	393	604	544	686	181
Cheshire West and Chester UA	UA	1,447	545	304	684	182
Rochford	SD	566	526	444	660	183
Newark & Sherwood	SD	479	730	557	658	184
Torridge	SD	589	610	512	646	185
Bedford UA	UA	-58	102	562	641	186
Boston	SD	723	582	583	635	187
Sedgemoor	SD	609	624	541	627	188
Bolton	MD	1,111	1,324	813	626	189
Hastings	SD	1,438	1,456	576	617	190
Runnymede	SD	220	221	434	611	191
Cambridgeshire	SC	235	367	290	592	192
Bromsgrove	SD	706	688	581	587	193
North Lincolnshire UA	UA	-1,288	801	697	568	194
Uttlesford	SD	443	420	510	560	195
Warwickshire	SC	601	845	347	558	196
Great Yarmouth	SD	359	345	296	548	197
South Bucks	SD	587	536	551	546	198
Ryedale	SD	470	488	460	544	199
South Kesteven	SD	715	619	545	542	200
Dacorum	SD	390	558	498	538	201
Worthing	SD	545	974	1,011	536	202
Barrow-in-Furness	SD	457	543	529	524	203
South Oxfordshire	SD	342	427	432	524	204
Braintree	SD	531	539	451	522	205
Carlisle	SD	837	683	569	510	206
Stafford	SD	791	384	777	452	207
Chorley	SD	405	601	494	444	208
Surrey Heath	SD	9	-3	634	439	209
Havant	SD	299	325	499	438	210
Charnwood	SD	465	472	445	431	211
Havering	L	140	703	676	424	212
Gosport	SD	247	359	346	408	213
Harborough	SD	389	476	459	404	214
Spelthorne	SD	673	678	581	403	215
Shepway	SD	141	40	309	397	216
Hart	SD	345	408	246	395	217
Thanet	SD	431	202	234	393	218
Wyre Forest	SD	512	442	421	388	219

West Devon	SD	428	354	397	380	220
Rugby	SD	318	391	311	376	221
Tewkesbury	SD	308	57	264	367	222
Mid Suffolk	SD	424	443	447	363	223
Bassetlaw	SD	275	220	233	362	224
Epping Forest	SD	501	379	319	362	225
Mid Devon	SD	234	185	244	357	226
Kettering	SD	407	387	341	354	227
Mansfield	SD	414	595	280	352	228
West Lancashire	SD	373	419	370	349	229
Rotherham	MD	247	352	438	345	230
Hartlepool UA	UA	510	445	346	342	231
Melton	SD	294	307	328	327	232
Wyre	SD	477	388	310	319	233
North Dorset	SD	298	307	327	316	234
Lewes	SD	334	298	252	315	235
Harlow	SD	313	232	245	308	236
Fylde	SD	247	261	255	303	237
Maldon	SD	215	312	305	300	238
Dudley	MD	490	283	409	293	239
Rushcliffe	SD	274	261	242	282	240
Amber Valley	SD	156	254	249	280	241
Castle Point	SD	353	388	364	279	242
Gateshead	MD	62	72	328	279	243
Eastbourne	SD	289	282	266	272	244
Burnley	SD	326	321	286	263	245
Welwyn Hatfield	SD	374	282	175	262	246
West Somerset	SD	400	334	254	248	247
Hambleton	SD	136	181	164	247	248
East Dorset	SD	172	128	176	238	249
Hinckley & Bosworth	SD	204	267	228	231	250
South Tyneside	MD	415	618	467	231	251
Knowsley	MD	-410	626	524	230	252
Cannock Chase	SD	228	368	168	226	253
Broxbourne	SD	746	307	197	222	254
Erewash	SD	400	364	236	221	255
Watford	SD	813	1,003	994	215	256
Rutland UA	UA	123	138	176	197	257
Dorset	SC	-91	23	134	196	258
Selby	SD	147	160	172	195	259
Copeland	SD	-110	200	226	188	260
Trafford	MD	491	412	358	183	261
Sandwell	MD	49	-48	-17	180	262
Middlesborough UA	UA	462	640	561	179	263
Richmondshire	SD	163	129	118	177	264
Stroud	SD	116	217	202	175	265
Arun	SD	382	394	474	174	266
Oldham	MD	295	224	134	168	267
Central Bedfordshire UA	UA	16	0	457	160	268
Purbeck	SD	151	129	128	157	269

North Kesteven	SD	101	101	127	148	270
Corby	SD	45	-5	129	146	271
Hertsmere	SD	-97	-73	61	141	272
Staffordshire Moorlands	SD	93	44	94	134	273
Lincolnshire	SC	0	0	-28	131	274
Ribble Valley	SD	114	111	119	112	275
Blackburn with Darwen UA	UA	54	203	80	105	276
Worcestershire	SC	-30	36	143	100	277
Ashfield	SD	-52	-35	-17	98	278
Hampshire	SC	73	74	96	96	279
Eden	SD	146	212	151	89	280
Stockton-on-Tees UA	UA	79	5	96	86	281
Staffordshire	SC	-18	277	-108	84	282
Forest Heath	SD	111	118	166	71	283
Adur	SD	182	112	106	68	284
Dartford	SD	-31	12	165	64	285
South Holland	SD	77	90	68	50	286
Crawley	SD	14	-229	-261	32	287
North West Leicestershire	SD	106	89	39	24	288
Nottinghamshire	SC	-523	12	-307	24	289
St Helens	MD	644	377	122	24	290
Forest of Dean	SD	-87	-183	-32	15	291
Basildon	SD	205	-129	-22	2	292
Bolsover	SD	0	0	0	0	293
Doncaster	MD	470	296	117	0	294
Hertfordshire	SC	0	0	0	0	295
Isles of Scilly	UA	0	0	0	0	296
Kent	SC	0	0	0	0	297
Suffolk	SC	726	0	0	0	298
South Northamptonshire	SD	-56	-4	-7	-7	299
Norfolk	SC	-872	-362	42	-17	300
Broadland	SD	-22	-22	-23	-19	301
South Norfolk	SD	-73	-75	-44	-26	302
South Ribble	SD	-2	-59	-59	-34	303
Bracknell Forest UA	UA	537	104	28	-37	304
Blaby	SD	-81	-77	-31	-39	305
Pendle	SD	-106	-41	-41	-46	306
Halton UA	UA	-90	-78	-100	-58	307
South Cambridgeshire	SD	-36	-39	0	-58	308
North Warwickshire	SD	-58	-56	-41	-60	309
Rossendale	SD	-54	-51	-59	-60	310
Rochdale	MD	453	623	156	-66	311
Leicestershire	SC	-314	-277	99	-70	312
North East Derbyshire	SD	32	-54	-85	-70	313
East Northamptonshire	SD	-71	-67	-67	-73	314
South Staffordshire	SD	-80	-64	-82	-76	315
Vale of White Horse	SD	91	90	-43	-76	316
Warrington UA	UA	-206	-243	-147	-76	317
Broxtowe	SD	-249	-139	-83	-77	318
South Derbyshire	SD	-60	-65	-55	-77	319

Redditch	SD	-40	-58	-76	-81	320
Tendring	SD	265	193	-70	-82	321
Northamptonshire	SC	-230	-127	-41	-87	322
Lancashire	SC	-253	-269	-334	-90	323
Malvern Hills	SD	128	86	96	-90	324
East Cambridgeshire	SD	-105	-184	-154	-95	325
Tandridge	SD	-77	-61	-63	-103	326
Babergh	SD	-181	-170	-116	-109	327
Somerset	SC	0	187	22	-117	328
Oadby & Wigston	SD	-117	-123	-114	-119	329
Walsall	MD	-89	-209	-286	-129	330
Telford and the Wrekin UA	UA	7	-123	-138	-131	331
West Oxfordshire	SD	-134	-133	-117	-142	332
Daventry	SD	-158	-148	-168	-155	333
Gedling	SD	128	-241	-206	-155	334
Hyndburn	SD	-107	-94	-62	-156	335
County Durham UA	UA	412	383	111	-159	336
Breckland	SD	-8	-139	-193	-162	337
Salford	MD	-309	510	80	-162	338
Three Rivers	SD	-153	-169	-87	-162	339
West Lindsey	SD	-167	-169	-69	-197	340
Slough UA	UA	-157	137	-223	-230	341
Derbyshire	SC	39	125	128	-258	342
Fenland	SD	-270	-331	-272	-297	343
Wellingborough	SD	-340	-284	-360	-316	344
Thurrock UA	UA	93	42	11	-323	345
Wealden	SD	-317	-301	-404	-328	346
Cumbria	SC	-176	-214	-340	-338	347
Sunderland	MD	-394	-362	-306	-383	348
West Sussex	SC	-360	497	-475	-420	349
Wolverhampton	MD	1,543	1,106	930	-421	350
Buckinghamshire	SC	-110	-23	-692	-424	351
South Gloucestershire UA	UA	-471	-578	-535	-442	352
Essex	SC	-469	-1,802	-936	-486	353