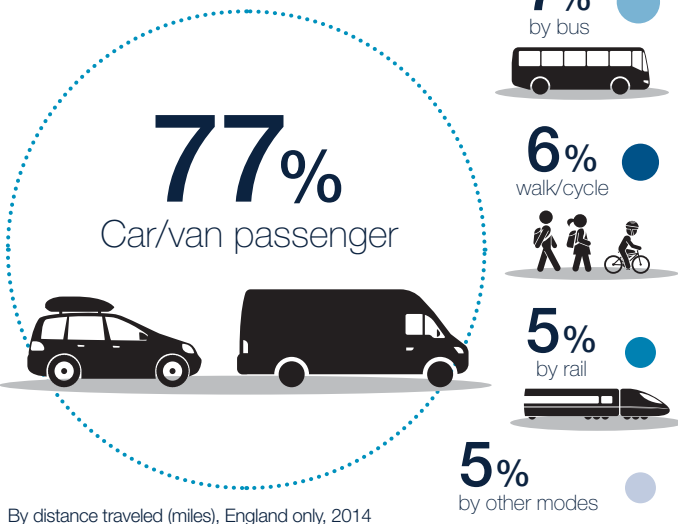




Child Road Safety in GB, 0-15 year olds, 2010-2014

All figures are 5 year averages unless otherwise stated

How do children travel?

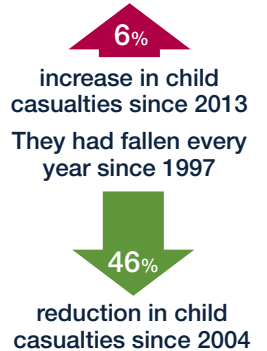


Child road casualties

In 2014 there were

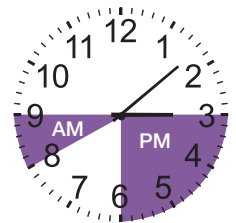
16,727 Child casualties in GB

2,082 of these were killed or seriously injured



When are children injured?

50% occur between the hours of

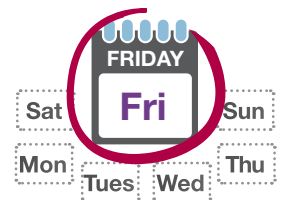


8 AM to 4 PM

The month with the highest number of child casualties is



17% of all child road casualties occur on a



Child casualties per week, in cars driven by 17-19 year olds

4

Girls



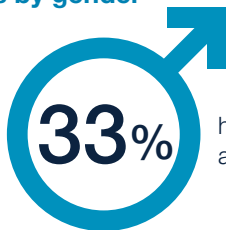
2

Boys



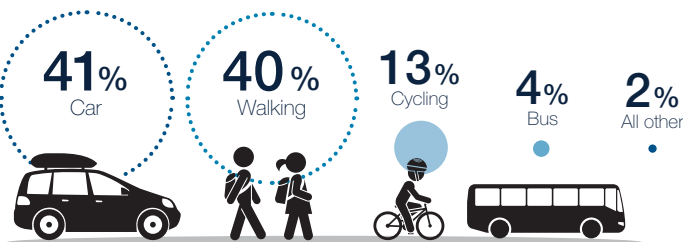
Child road casualties by gender

Casualties amongst boys are

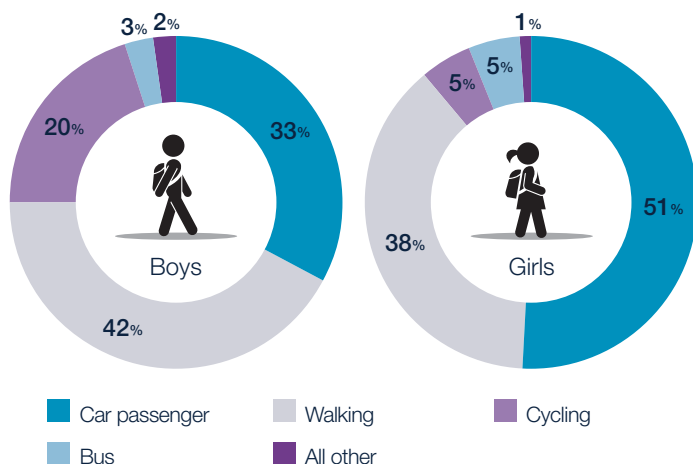


higher than those amongst girls

How do child casualties differ by road user type?



Child casualties, by travel mode and gender



Which areas have the highest child casualty levels?

Rank	Local Authority	Average annual child casualties per 10,000 resident children	Average annual child casualties
1	Blackpool	30.84	79
2	Hyndburn	29.83	49
3	Blackburn with Darwen	28.69	98
4	Burnley	28.66	50
5	North East Lincolnshire	28.30	86